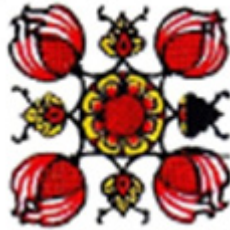


# Quarterly Tours



Jayatissa Herath

**NATIONAL TRUST – SRI LANKA**

08 th July 2017

# QUARTERLY TOUR 2017

## The Brief Garden and Lunuganga in Bentota

### Tour Leader

Vidyajothi Architect Ashley de Vos - Senior Vice President of the National Trust Sri Lanka.

### Tour Coordinator

Ms. Ayomi Aluwihare (Attorney-At-Law) - Trustee of the National Trust Sri Lanka.

### Route

By Van : Colombo – Exit at Aluthgama intersection – Bentota  
Return on the same route.

### Itinerary

6.30 am	Meet at PGIAR and leave at 7.00 am
8.00 am	Restroom Stop - Expressway Service centre
9.00 am	Visit Brief Gardens (Bevis Bawa) and Tea
12.30 pm	Lunch at “ <i>Dalmanuta Gardens</i> ” – Dharga Town, Bentota
3.00 pm	Visit Lunuganga Estate (Geoffrey Bawa) and watch a great Sunset
6.00 pm	Leave for Colombo on Expressway with stop at Service centre
7.00 pm	Arrive at PGIAR

*The itinerary planned may change depending on factors such as time and weather. **Please refer last page for more informations on the tour.***



## **BRIEF GARDEN**

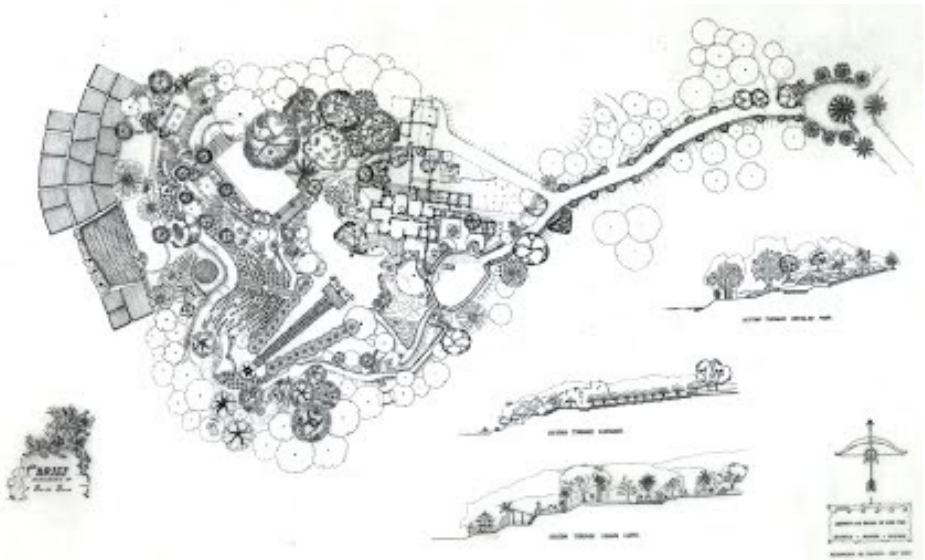
Brief is the home and Garden of Bevis Bawa (1909-1992), located nine kilometres inland from Bentota. Road to Brief start from its entrance gate with two statues and runs through a man-made jungle, dark and mystique.

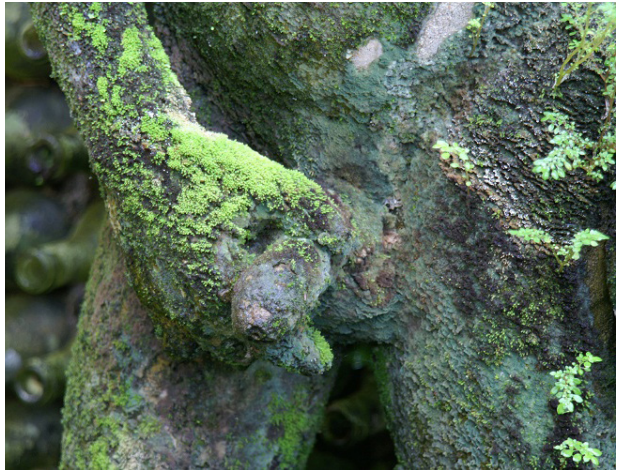
It had been a large rubber plantation of Bawa family given to their elder son Bevis in 1920 s. Bevis who was fascinated with its environment, converted a part of the land, around five acres of the plantation to an attractive garden and altered the small planters' bungalow into an exciting retreat in year 1929. Bevis Bawa was a self-taught, self-declared artist, cartoonist, sculptor, columnist,

soldier, planter, and a prominent landscape gardener and brother of the renowned architect Geoffrey Bawa.

Bevis has spent his hedonistic life in this retreat hosting many artists from Colombo. The garden is with hillside views and art works from erotic sculpture to wonderful murals of Sri Lankan life. Most of the sculptures are homoerotic. Dozens of local and foreign artists including Donald Friend were responsible in creating these sculptors together with Bevis Bawa himself. It is said that Australian artist Donald Friend had spent five years from 1957 to 1962 at the Brief.

These sculptors and pieces of works of art differ in size, method of production, value, obscurity and authorship. Brief was opened to public in early 1970.







## LUNUGANGA

Lunuganga estate, located four kilometres away from the Colombo - Galle Road, on the banks of Dedduwa Lake, Bentota was the country home of the renowned Sri Lankan Architect Geoffrey Bawa. Geoffrey was first a lawyer who called to Bar at the inner temple in 1940 and later became an Architect who designed many outstanding pieces of architecture including the present house of Parliament.

The estate originally had been used as a cinnamon estate during the Dutch time and then as a rubber plantation. In 1949, Geoffrey had bought the estate of around fifteen

acres in extent to have his weekend bungalow and the garden.

Though the Lunuganga is a work of art by itself, it is a resultant of many architectural experiments that the designer carried out during his life time. The garden contains works of arts by many artists including Donald Friend and Laki Senanayake and also artefacts of Asia and Europe.

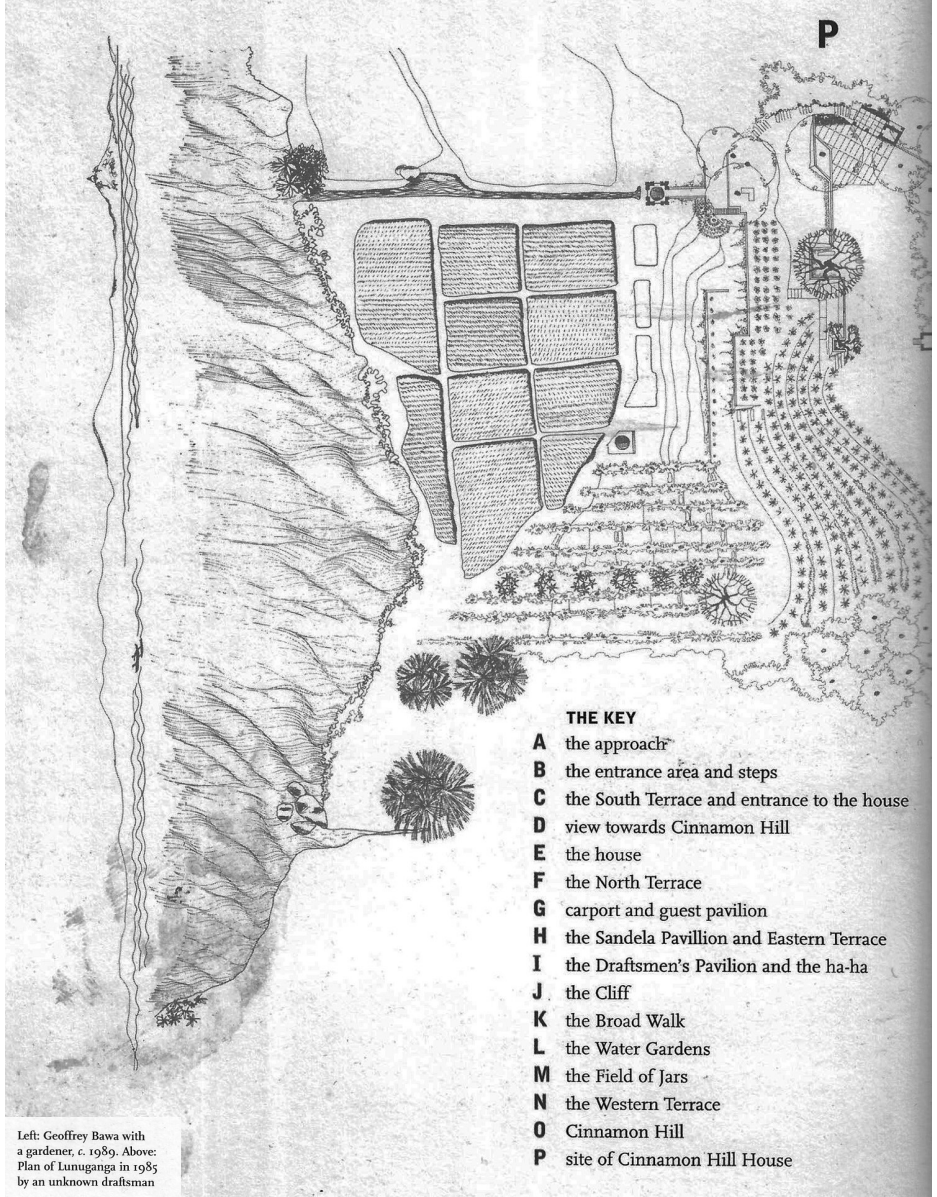
Geoffrey had continued to develop this house and the garden for forty years until his death in May 2003. Remains of late Geoffrey was cremated and buried at the Cinnamon hill area.



The Garden space was so manipulated with carefully selected plants. The Frangipani are significant and that they stand along the broad walk emphasizing formality. Different scenic views are framed by these trees from front of the house towards the water beyond. The garden is more complex close to the house. Retaining walls, small courtyards nicely fit into the sceneries. The painted old doors

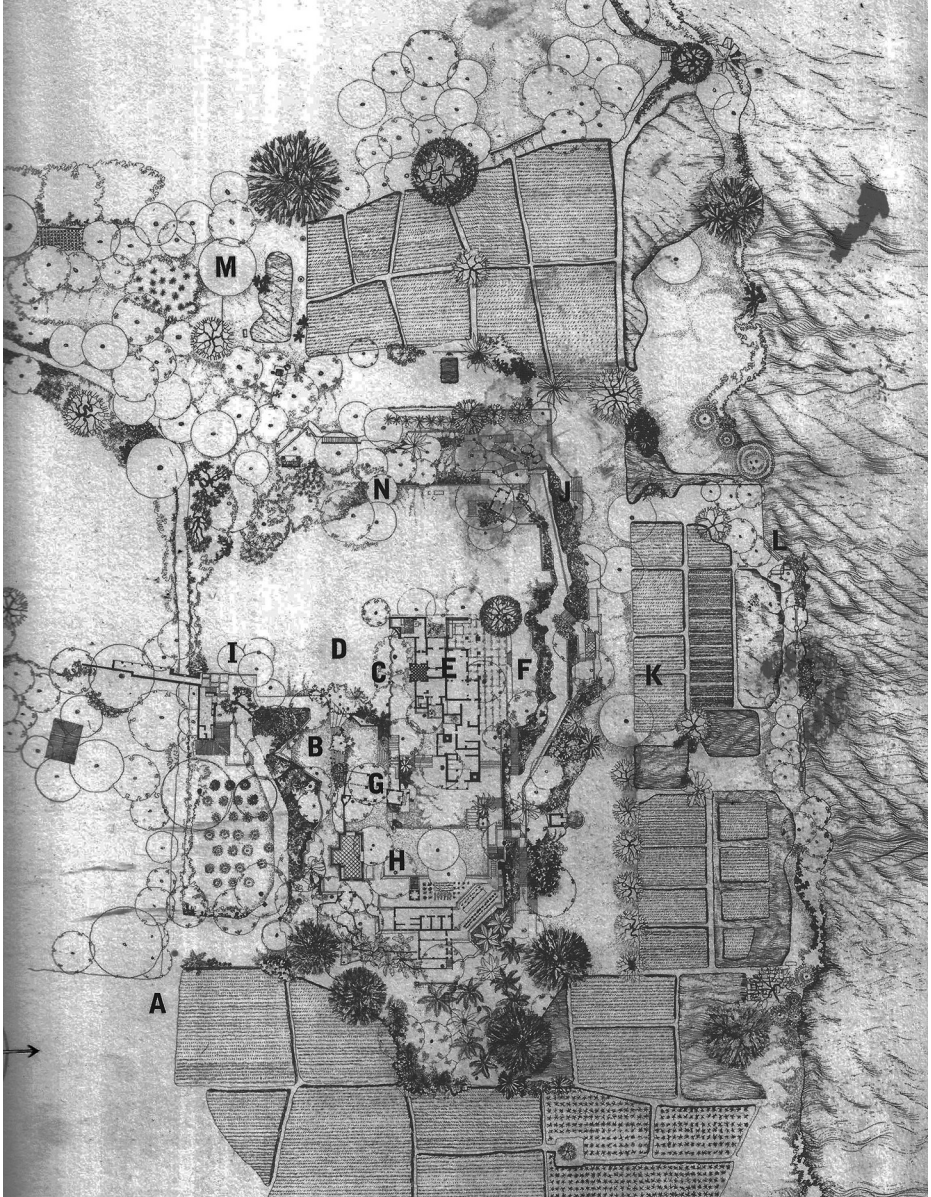
are also harmonising in their best. The effect of Sunlight filtering through the leaves is the most beautiful thing according to Geoffrey. Courtyards, walkways, Lilly ponds and pavilions all set elaborately within an exotic jungle together with lovely collection of art and antiques.





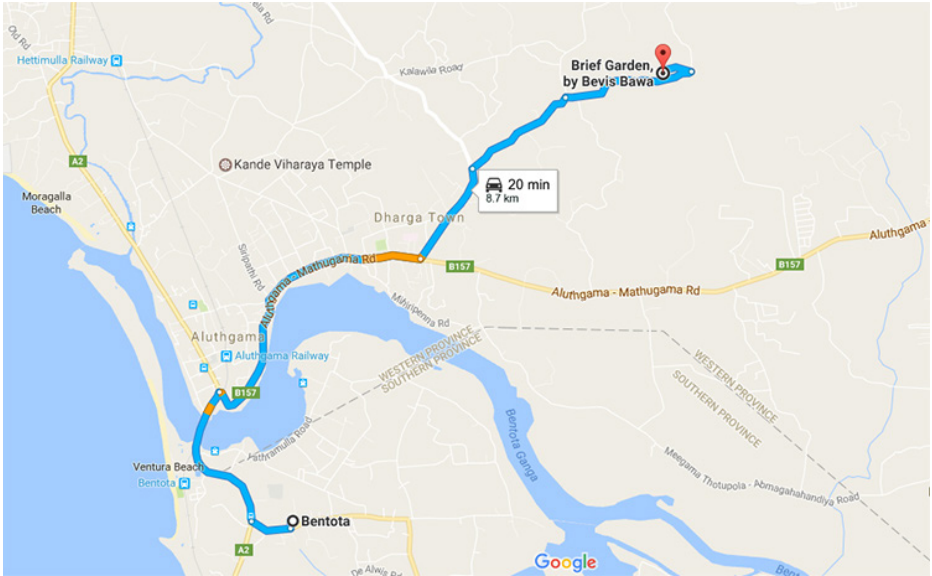
Left: Geoffrey Bawa with a gardener. c. 1989. Above: Plan of Lunuganga in 1985 by an unknown draftsman



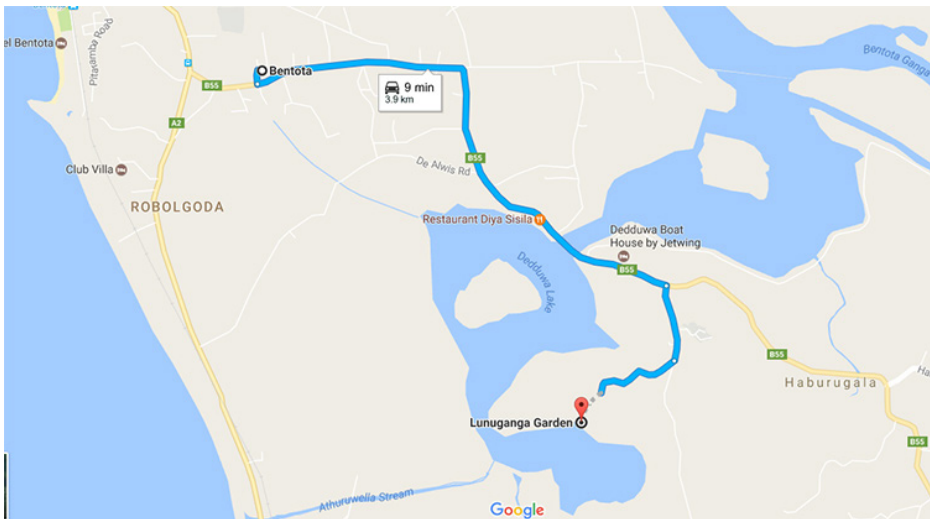




Frangipani / Araliya



Directions to Brief Garden from Bentota



Directions to Lunuganga from Bentota

*Credits:*

*Photos and information*

<https://briefgarden.blogspot.com>

[www.tripadvisor.com](http://www.tripadvisor.com)

[www.lonelyplanet.com](http://www.lonelyplanet.com)

[www.vishvakarma.lk](http://www.vishvakarma.lk)

[www.lamka-house.com](http://www.lamka-house.com)

<https://sites.google.com/site/brieflybybevis/garden-plan>

[www.blog.rosstours.com](http://www.blog.rosstours.com)

[www.geoffreybawa.com](http://www.geoffreybawa.com)

[www.yamu.lk](http://www.yamu.lk)

[www.inspirock.com/lunuganga](http://www.inspirock.com/lunuganga)

<https://www.i-escape.com/lunuganga>

[www.indeendant.co.uk](http://www.indeendant.co.uk)

[www.alamy.com/stock-photo-](http://www.alamy.com/stock-photo-)

[www.srilankainstyle.com](http://www.srilankainstyle.com)

Plans and layouts:-

BAWA-THE SRI LANKA GARDENS-David Robson Dominic Sansoni.

Thames and Hudson.2008.

Google Maps

## **Meals**

Breakfast should be whilst travelling. Each participant is requested to bring their own breakfast or could have self paid breakfast at the expressway food outlet.

A simple Sri Lankan lunch has been organised to accommodate both veg and non veg meal preference.

A pack of fruit juice will be provided on board.

Bottles of water are available on board.